

Model SL-T8 22W LED

Features:

- Latest emergency power pack module designed for Philips T8 22W LED tube which provides 2 hours operating duration under emergency mode
- Suitable for fixed output and dimmable drivers
- Fitted with a Test Switch allows emergency operation of the single emergency luminaire to be tested by depressing push button test switch
- Small size in 28mm x 35mm cross sectional dimension that fits into slim luminaire

Specifications:

Model Type:	SL-T8 22W LED
Lamp Type:	Philips Master LED tube 22W
Battery Pack Capacity:	C-cell 2.5AH High Temp. NiCd
Battery Voltage	12.0V
Mode of operation	Maintained
Operating Duration:	2hours
Test Facility	Standard (push on test switch)
Mains Supply Voltage:	220-240V, 50/60Hz
Power consumption (under steady state):	< 4.0W
Recharge period:	24 hours (48hours for first time)
Trickle charge:	Constant current 75mA to 130mA
Nominal Discharge Current at 2 hours duration:	1.1 A
Lumen factor	40% (Typical)
Safety feature	Low voltage cut-off to prevent over discharge of battery
Ambient Temperature Range:	+5°C to +50°C
Max. Case Temperature:	+70°C
Min. lamp starting temp (Emergency mode)	+5°C
Ingress protection	IP20
Distance of mounting hole (mm)	220mm
Casing Dimensions:	230mm (L) x 35mm (W) x 28mm (H)
Compatibility	
Compliance	
Approval	N.A.
Warranty	1 year

**subjects to change, pls consult TDE for further detail.*

Mechanical Dimensions:

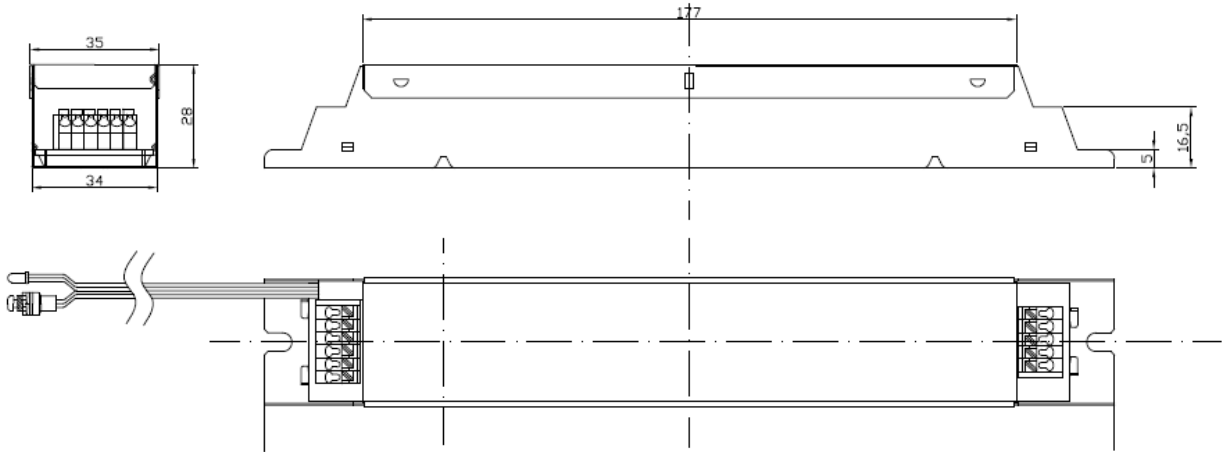


Diagram-1: mechanical outline, 230mm (L) x 35mm (W) x 28 mm (H)

Wiring Diagram:



Application guide:

- Install the unit according to National Electric Code;
- To ensure maximum performance of the built-in battery, please fully charge the unit for 24hours after first installation;
- Caution: any improper wiring or short-circuit may lead to permanent damage to the unit;
- Lamp wire should be as short as possible to avoid unnecessary loading to the unit;
- Mount the unit away from any heat source to further prolong service life;
- Please ensure that the operating ambient temperature is below 50°C, and maximum case temperature (tc) not exceeding 70°C;
- Do not throw or drop the unit to avoid damage the internal electronic component;
- Do not operate this unit beyond the operating supply range;
- Do not operate this unit with AC power generator;
- Caution: DO NOT dispose this LED system into fire as it contains built-in battery that may causes serious explosion!