

## Emergency Power Pack for External Driver LED (SL EXD42)

### Features:

- Latest emergency power pack module designed for LED lamp which provides 2 hours operating duration under emergency mode
- Fitted with a Test Switch allows emergency operation of the single emergency luminaire to be tested by depressing push button test switch
- Small size in 28mm x 35mm cross sectional dimension that fits into slim luminaire

### Specifications:

Model Type:	EXD42-100A-7AA	EXD42-130A-7C	EXD42-250A-7D
Mode of operation	Maintained		
Operating Duration:	> 2hours		
Test Facility	Standard (push on test switch)		
Mains Supply Voltage:	220-240V, 50/60Hz		
Power consumption (under steady state):	< 4.0W		
Recharge period:	24 hours (48hours for first time)		
Battery Pack Capacity:	7 x 1.2V 2.1AH AA size	7 x 1.2V 2.5AH C size	7 x 1.2V 4.5AH D size
Battery Voltage	8.4V	8.4V	8.4V
Battery Current Rating	2.1A	2.5A	4.5A
Trickle charge:	130mA	130mA	130mA
Nominal Discharge Current at 2 hours duration:	1.0A	1.2A	2.2A
PP Output Current	100mA	130mA	230mA
PP Output Voltage	16-42Vdc		
Safety feature	Low voltage cut-off to prevent over discharge of battery		
Ambient Temperature Range:	+5°C to +50°C		
Max. Case Temperature:	+70°C		
Min. lamp starting temp (Emergency mode)	+5°C		
Ingress protection	IP20		
Distance of mounting hole (mm)	220mm		
Casing Dimensions:	230mm (L) x 35mm (W) x 28mm (H)		
Compatibility			
Compliance			
Approval	N.A.		
Warranty	1 year		

\*subjects to change, pls consult XXX for further detail.

## Mechanical Dimensions:

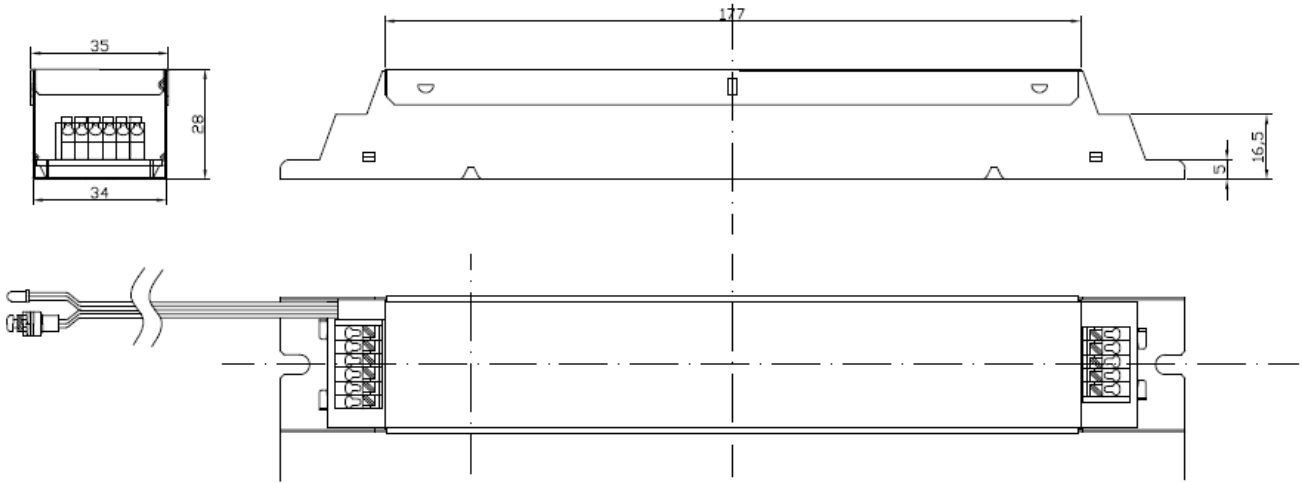


Diagram-1: mechanical outline, 230mm (L) x 35mm (W) x 28 mm (H)

## Wiring Diagram:



### Application guide:

- Install the unit according to National Electric Code;
- To ensure maximum performance of the built-in battery, please fully charge the unit for 24hours after first installation;
- Caution: any improper wiring or short-circuit may lead to permanent damage to the unit;
- Lamp wire should be as short as possible to avoid unnecessary loading to the unit;
- Mount the unit away from any heat source to further prolong service life;
- Please ensure that the operating ambient temperature is below 50°C, and maximum case temperature (tc) not exceeding 70°C;
- Do not throw or drop the unit to avoid damage the internal electronic component;
- Do not operate this unit beyond the operating supply range;
- Do not operate this unit with AC power generator;
- Caution: DO NOT dispose this LED system into fire as it contains built-in battery that may causes serious explosion!